

# Vertical-Chips · Glass Package 垂直芯片 · 玻璃封装 Single Color LEDs 单色光源

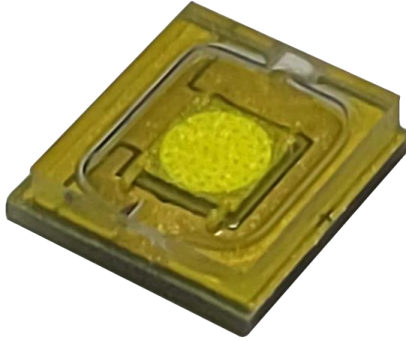
Main Applications:  
主要应用领域:

- ✓ directional projection and beam lighting with small angle for projection, light beam, dyeing, pattern, audience, business, hotel, museum, etc.  
小角度方向性投射类照明，适用于投射，光束，染色，图案，观众，商业，酒店，博物馆等
- ✓ medical and micro-instrument lighting  
医疗与显微器械照明

# S1173b

## Special Stage and Landscape Lighting 特种舞台景观照明

Chip with circular light emitting surface

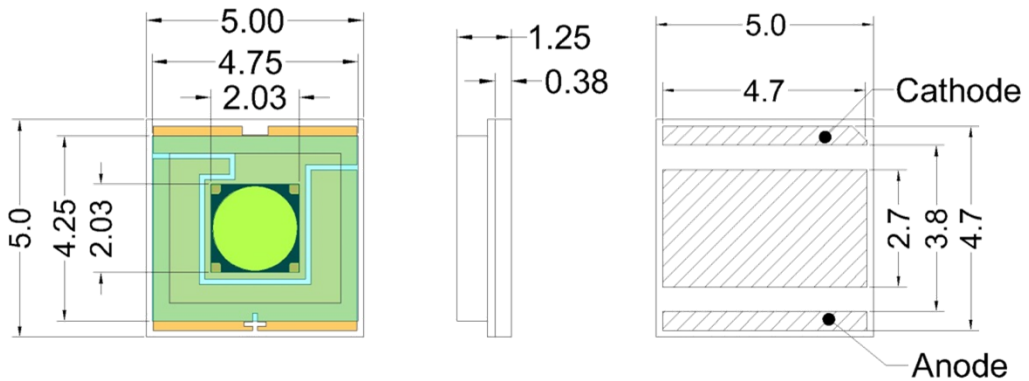


Main Parameters	Typical Values
Voltage (V)	3
Current (mA)	5225
Max. Power (W) <sup>Note</sup>	20
LES (mm)	1.8
CCT (K) / Ra	8350-9000
Color / Dominant Wavelength (nm)	N/A
Matched Cu Board	H003-2020 H013-1818 H041-1818 H063-3333

Note: The maximum power only for reference and related to the heat dissipation power of the radiator, the thermal resistance between the radiator and the light source and the ambient temperature.

### Main Features

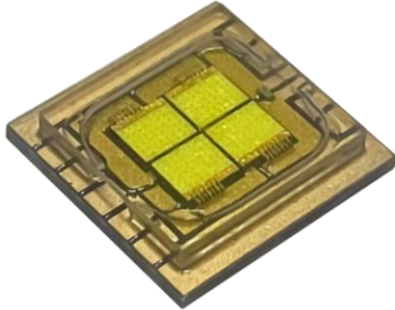
- Low Power Single Color Integrated Lighting Source;
- Glass Package Using AlN Ceramic Substrate for Low Heat Resistance;
- Vertical Chips Capable of Super-Driving Current for Highly Intensive Lighting;
- Customizing Other Power, LES, Color Combination, CCT and Ra;
- Applicable to Directional Projection Lighting with High Brightness.



【 Data in table, photos & diagrams for reference only】

# S1146

## Special Stage and Landscape Lighting 特种舞台景观照明

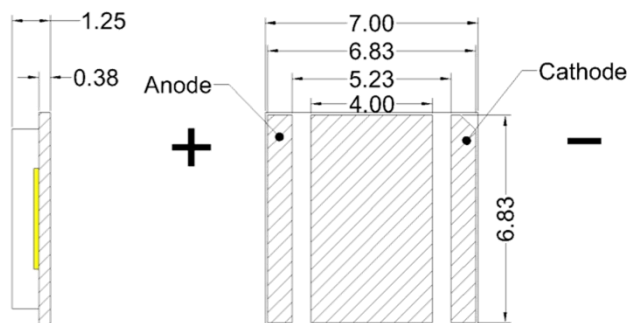
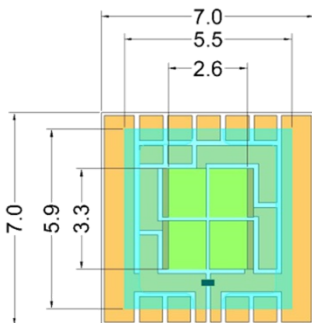


Main Parameters	Typical Values
Voltage (V)	12
Current (mA)	3950
Max. Power (W) <sup>Note</sup>	55
LES (mm)	3.3x2.6
CCT (K) / Ra	8350-9000
Color / Dominant Wavelength (nm)	N/A
Matched Cu Board	H004/H010-2020 H015/H030-1818 H018-2728

Note: The maximum power only for reference and related to the heat dissipation power of the radiator, the thermal resistance between the radiator and the light source and the ambient temperature.

### Main Features

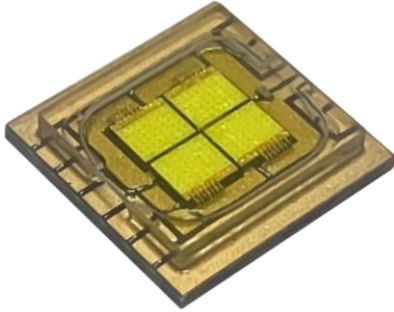
- Middle Power Single Color Integrated Lighting Source;
- Glass Package Using AlN Ceramic Substrate for Low Heat Resistance;
- Vertical Chips Capable of Super-Driving Current for Highly Intensive Lighting;
- Customizing Other Power, LES, Color Combination, CCT and Ra;
- Applicable to Directional Projection Lighting with High Brightness.



【 Data in table, photos & diagrams for reference only】

# S1392

## Special Stage and Landscape Lighting 特种舞台景观照明

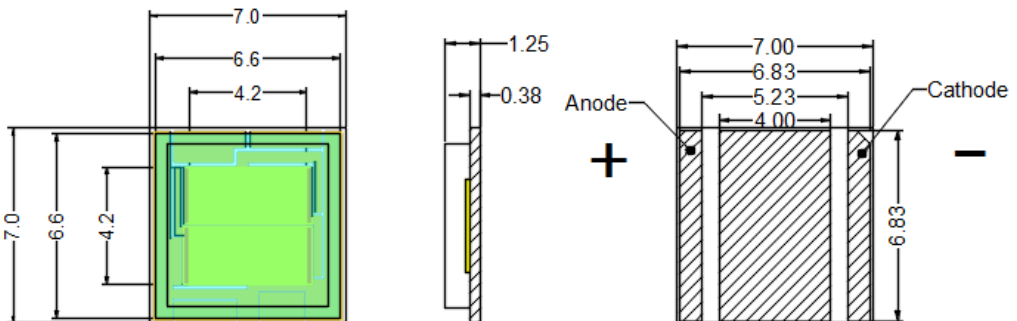


Main Parameters	Typical Values
Voltage (V)	12
Current (mA)	7540
Max. Power (W) <sup>Note</sup>	117
LES (mm)	4.2x4.2
CCT (K) / Ra	12500-14500
Color / Dominant Wavelength (nm)	N/A
Matched Cu Board	H004/H010-2020 H015/H030-1818 H018-2728

Note: The maximum power only for reference and related to the heat dissipation power of the radiator, the thermal resistance between the radiator and the light source and the ambient temperature.

### Main Features

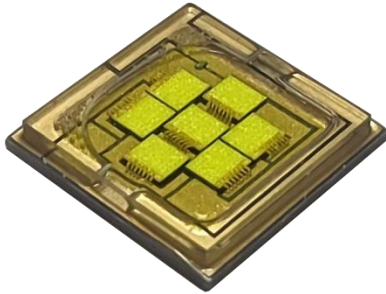
- Middle Power Single Color Integrated Lighting Source;
- Glass Package Using AlN Ceramic Substrate for Low Heat Resistance;
- Vertical Chips Capable of Super-Driving Current for Highly Intensive Lighting;
- Customizing Other Power, LES, Color Combination, CCT and Ra;
- Applicable to Directional Projection Lighting with High Brightness.



【 Data in table, photos & diagrams for reference only】

# S1147

## Special Stage and Landscape Lighting 特种舞台景观照明

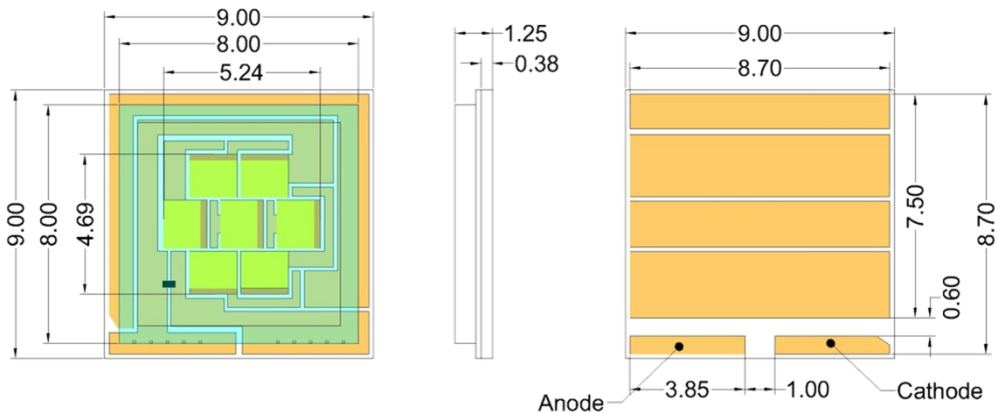


Main Parameters	Typical Values
Voltage (V)	21
Current (mA)	3950
Max. Power (W) <sup>Note</sup>	97
LES (mm)	5.2x4.7
CCT (K) / Ra	8350-9000
Color / Dominant Wavelength (nm)	N/A
Matched Cu Board	H053-3636 H057-2728

Note: The maximum power only for reference and related to the heat dissipation power of the radiator, the thermal resistance between the radiator and the light source and the ambient temperature.

### Main Features

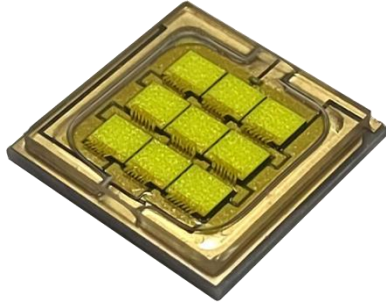
- Middle Power Single Color Integrated Lighting Source;
- Glass Package Using AlN Ceramic Substrate for Low Heat Resistance;
- Vertical Chips Capable of Super-Driving Current for Highly Intensive Lighting;
- Customizing Other Power, LES, Color Combination, CCT and Ra;
- Applicable to Directional Projection Lighting with High Brightness。



【 Data in table, photos & diagrams for reference only】

# S1148

## Special Stage and Landscape Lighting 特种舞台景观照明

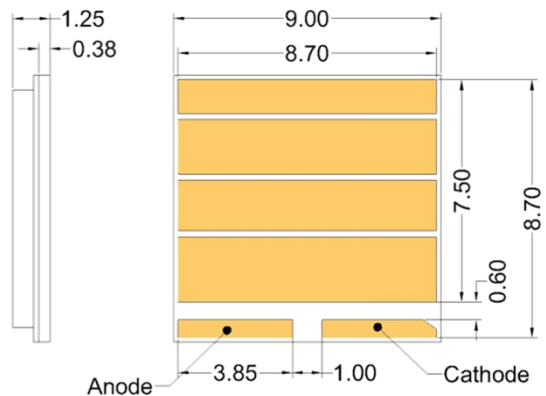
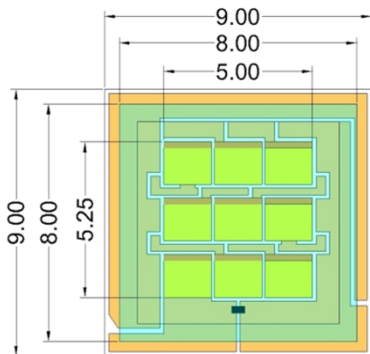


Main Parameters	Typical Values
Voltage (V)	27
Current (mA)	3950
Max. Power (W) <sup>Note</sup>	125
LES (mm)	5x5.25
CCT (K) / Ra	8350-9000
Color / Dominant Wavelength (nm)	N/A
Matched Cu Board	H053-3636 H057-2728

Note: The maximum power only for reference and related to the heat dissipation power of the radiator, the thermal resistance between the radiator and the light source and the ambient temperature.

### Main Features

- Middle Power Single Color Integrated Lighting Source;
- Glass Package Using AlN Ceramic Substrate for Low Heat Resistance;
- Vertical Chips Capable of Super-Driving Current for Highly Intensive Lighting;
- Customizing Other Power, LES, Color Combination, CCT and Ra;
- Applicable to Directional Projection Lighting with High Brightness.



【 Data in table, photos & diagrams for reference only】